

EVENT calendar

SUNDAY, SEPTEMBER 11

8:00AM	Worship Service	Sanctuary
8:00AM	Preschool/K & Nursery	Rm LL-2/Nursery - Lower Level
8:00AM	Children's Ministry Activities	Rm CM 3-10 - Lower Level
9:30AM	Worship Service	Sanctuary
9:30AM	Preschool/K & Nursery	Rm LL-2/Nursery - Lower Level
9:30AM	Children's Ministry Activities	Rm CM 3-10 - Lower Level
9:30AM	Middle School Sunday School	Youth Room
9:30AM	High School Sunday School	Youth Room
11:00AM	Facing Cancer with Hope	Boardroom
11:00AM	GriefShare	Glass Classroom
11:11AM	Worship Service	Sanctuary
11:11AM	Preschool/K & Nursery	Rm LL-2/Nursery - Lower Level
11:11AM	Children's Ministry Activities	Rm CM 3-10 - Lower Level

MONDAY, SEPTEMBER 12

6:30PM	Young Adults (26-40) Small Group	Kaimuki
7:00PM	Young Adults (18-25) Small Group	Kaneohe

TUESDAY, SEPTEMBER 13

9:30AM	Mighty Moms	CM 4 th /5 th classroom
6:30PM	DivorceCare	Glass Classroom

WEDNESDAY, SEPTEMBER 14

6:30PM	ALPHA	Grand ballroom
--------	-------	----------------

THURSDAY, SEPTEMBER 15

8:30AM	Jam & Jelly Making	FPC Kitchen
6:00PM	Dance Ministry	Glass Classroom
6:00PM	SPARTANS (Men's Ministry)	CM 4 th & 5 th grade classroom

FRIDAY, SEPTEMBER 16

9:00AM	Women's Crafts Group	Glass Classroom
6:00PM	Middle School	Youth Room
7:00PM	High School	Youth Room
7:00PM	Funky Town (Parent Group)	Glass Classroom
9:00PM	High School	Youth Room

SATURDAY, SEPTEMBER 17

9:00AM	Jam & Jelly Making	FPC Kitchen
3:45PM	Military Moms/Dads Night Out	CM Area
4:00PM	Laundry Love	Waimanalo

IMPACT MINISTRIES

LOCAL | GLOBAL MISSIONS

Contact: Pastor Tim Shaw: tim@fpchawaii.org / 808-532-1117

LAUNDRY LOVE

Sept 17, Sat, 3:30-7 pm, Waimanalo

Laundry Love is our ministry to the homeless and those in need where we provide them with free laundry services at a Waimanalo laundromat and in the process get to know them. We need volunteers to help at this monthly outreach. Sign up online at fpcimpact.org. Earliest available slots are in December, but you can sign up to be on the wait list. If you'd like to make a donation to help pay for Laundry Love, just place your spare change (bills and checks are welcome as well) in the laundry bucket at the entrance to the Sanctuary.

DO JUSTICE SATURDAY

Sept 24, Sat, various locations

Do Justice Saturday is a day of various opportunities to serve our communities. Projects include a wellness clinic, a literacy camp, feeding the homeless, a basketball camp, various site clean-ups, and more. Sign up online at fpcimpact.org for a project to serve at.

CLOTHING/SUPPLIES DRIVE FOR KOKUA CLOSET

TODAY and next Sun, Sept 18, POD in parking lot
Help stock and organize an emergency resource room for the ministry called Kokua Closet, which supports foster care and families facing hardship. There is a POD in the parking lot TODAY and next Sun, Sept 18, where you can drop off donations of supplies for babies, gently-used or new clothes and shoes, toiletries, school supplies, backpacks, twin beds and bunk beds. Thank you!

DONATE USED EYEGLASSES

Improve the vision of many people in Kenya by donating your old eyeglasses. Eye doctors and eye care professionals going on a mission trip to Kenya this October will re-purpose those glasses to help those in need. Drop off your eyeglass donations at the Front Desk no later than Sept 30.

TIMES FOR FIRST PREZ SERMONS ON TV

Oceanic Channels 25 & 1025 (in HD)/Digital 36

Mondays 7:30-8 pm; Tuesdays 3-3:30 am;

Wednesdays & Sundays 11-11:30 am; Thursdays 9-9:30 pm; Fridays 7-7:30 am; Saturdays 11:30 pm-12 am

MEDIA RELEASE: Your image and voice may be used either for television, radio or on audio/visual products. Your presence constitutes your release of all rights.

THANK YOU FOR YOUR KOKUA Please turn off pagers and cell phones during worship, and please refrain from bringing food and beverages

inside the Sanctuary. Also, we love babies, but if yours is crying, comfort him/her in the infant room to the side of the Sanctuary.

PARKING

Let's help the elderly and those with difficulty walking by leaving parking spaces closest to the Sanctuary available for them.

FOR THE HEARING IMPAIRED

To help you listen to today's worship service better, borrow one of our assistive listening devices available at the sound booth in the Sanctuary.

DEPLOYED MILITARY PRAYER LIST

Do you know people in the military who have been deployed? Write down their names on the Aloha Form along with their military branch, their location and their relation to you. We'd like to keep them in prayer on a regular basis. Call 532-1115. And if you know of anyone on our list who has returned home, please notify us.

First Prez Members	Family & Friends	Sam Davis	Judy Kovell	Schnellbacher
& Regular Attenders	1 st , 2 nd , 3 rd BN 3D	A. Diamond	Joshua Lum	Charles Shelton
Redmond Gautier	Marines	Douglas Francis	S. Manglona	J. Tang
Nigel Gonzaga	Air Force Reserves 48 th	Orlando Fraser	William McGregor	Natasia Upadahaya
David Guerrero	APS Doug Alfar	William Heron	Rob Metthe	Evelyn Vento
Christi Morrissey	Robert Andrews	William Hollifield	Marcy Meyer	Wendi Waits
Jason Palmer	Kevin Bullough	Phil Hollstein	Steve Morris	Paul Wiley
Sean Thompson	Michael Cacciapuoti	Bonnie Huber	Daniel Murphy	Lenny Williams
Abraham Webb	Toby Caldwell	Damon Hunt	Lee Nakasone	Aaron Yoshimura
	Rudy Cardona	Andrew Hutchison	Rob Pederson	
	John Cruz	Benjamin Ivansco	Sebastian	



FIRST PRESBYTERIAN CHURCH OF HONOLULU AT KO'OLAU

45-550 Kionaole Road ■ Kane'ohe ■ HI 96744

(808) 532-1111 ■ www.fpchawaii.org ■ aloha@fpchawaii.org

www.facebook.com/firstprez www.twitter.com/firstprez



IGNITE (worship night)

Sept 18, Sun, Sanctuary

Worship 6-7:30 pm, Coffee bar open 7:30-8:30pm
Limited childcare available for kids 5 or younger

IGNITE will be a powerful, reflective night of modern worship expressions to honor God and ignite His love and power in our lives. Led by Ryan Smithson and the 11:11 Band, IGNITE will include music, prayer, scripture, and a short reflection by Brandon Perkins, First Prez's Director of High School Ministry. **IGNITE is designed for young adults, but all are welcome to attend.**

MIXED PLATE

Oct 1, Sat, 8:30 am-3 pm, FPC

A day of various classes for women including oil painting, hiking, parenting made simple, how to pray, and more! Cost: \$18 (includes lunch). Drop by the Women's Ministry table in the Fellowship Hall for more info and to register for these events, or register online at fpchawaii.org

LIFE TRAINING CLASSES

Sunday mornings beginning Sept 25

Registration starts today in the Fellowship Hall

Life Training Classes are meant to help adults learn about God and deepen their relationship with Him. Check out the brochure enclosed in this bulletin to see the list of classes. For more info and to register for a class, drop by the Life Training table in the Fellowship Hall after the worship service.

BLOOD DRIVE

Sept 18, Sun 7:15 am-12:30 pm, First Prez

Consider being a blood donor at our Blood Drive next Sunday. It takes all blood types—A, B, and O—to save lives. Register to be a donor by calling 848-4770, or by signing up in the Fellowship Hall. Thank you for giving the gift of life!

GIVE ALOHA

First Prez is once again participating in GIVE ALOHA, Foodland's gift-matching program for nonprofits. It's a way of super-sizing your gifts. See page 2 for details on how to GIVE ALOHA.



Men's Dinner featuring Terry Cook on Sept 27. See page 2.

WELCOME TO FPC

WELCOME, VISITORS!

Glad that you're worshipping the Lord with us today! Drop by the Hospitality table at the Sanctuary entrance and pick up your coupons for a free CD of one of our worship services (including today's) and a complimentary espresso drink. We also invite you to the Fellowship Hall for refreshments, fellowship, and information about the church. Thanks for visiting, and we hope you stick 6! Stick around for at least six Sundays to see if First Prez is the right fit for you.

KO'OLAU KITCHEN

- Crab, Spinach and Mushroom Quiche
- Herb Baked Chicken
- Vegetarian Lasagna
- Kalua Pork Sandwich
- Chicken and Sausage Gumbo

HONEY'S

Check out Honey's on the lower level of our campus as a dining option.

- Open Mon-Tues 7am-3pm, Wed-Thurs 7am-5pm, Fri-Sat 7am-8:45pm, Sun 7am-7:30pm

KO'OLAU GOLF

- Let's pray for sunny weather to make our course conducive for golfing.
- Join the K-Club, Ko'olau Golf's golfer development program. Drop by the ProShop downstairs for more info.

FINANCIAL REPORT

(As of 08/31/16)

Annual Budget:	\$ 4,195,256
YTD Income:	\$ 2,078,490
YTD Expenses:	\$ 2,436,219
YTD Difference:	(-) \$ 357,729

For your convenience, online donations can now be made at www.fpchawaii.org or the First Prez mobile app. Please indicate in your check or on your online donation if you're giving to the capital campaign fund.

PLANNED GIVING

Learn about creative ways to support First Prez through planned gifts that benefit you, your loved ones, and the church. Go to our website at fpchawaii.org to learn get more info on gifts that cost you nothing during your lifetime.

ACTS 1:8 APPEAL



THE ACTS 1:8 APPEAL

This is a prayerful call for sacrificial giving above and beyond tithes and offerings as we raise \$1.8M to retire the remaining debt incurred from the purchase price of our Ko'olau campus. Eliminating the debt will make available up to \$140,000 a year for ministry. Thank you to everyone who have made a pledge! Your contribution matters. If you have not made a pledge but would like to, please pick up a pledge card from the Front Desk. Thank you!

GENERAL INFO

CHANCEL FLOWERS

Today's flowers were arranged by the First Prez Floral Team and donated by Kenneth & Linda Chun. "In loving memory of Linda's mother and stepfather, Jane and Jimmy Lao, who would have celebrated their 39th wedding anniversary this September."

RUNNERS ON KIONAOLE ROAD

Sept 18, Sun, 6-9 am
Please drive carefully on Kionaole Road next Sunday morning because runners will be using it for the annual Old Pali Road Run. Let's extend our aloha and share the road!

PHIL RYKEN AT FIRST PREZ

Sept 18, Sun, all worship services
Wheaton College President Dr. Phil Ryken will be our guest preacher on Sunday, Sept 18th. He will expound on 1 Peter 1:3-9 and share his thoughts on what enables people to love Jesus whom they have never seen. Dr. Ryken is also a prolific author having published 40 books, the latest of which is entitled "When Trouble Comes."

GIVE ALOHA Ongoing till Sept 30

Give Aloha is Foodland's gift-matching program that benefits nonprofits like First Prez. You can participate by giving a portion of your tithes and offerings to First Prez through Foodland. Here's how:

- Go to any Foodland store.
- Tell a cashier that you want to make a donation to First Prez through Give Aloha using code 77299.
- Cashier will ask for your Maika'i card, Foodland's frequent shopper program. If you don't have a card, you can get one.
- You can donate up to \$249.
- Keep transaction receipt for tax purposes.

NOMINATIONS OPEN FOR ELDERS AND DEACONS 2017

If you know of a First Prez member who displays godly leadership with love and compassion, consider nominating him/her to be a First Prez Elder or Deacon for 2017. Nomination forms (with position descriptions) are available at the Front Desk. Deadline to submit nominations is Sept 15. Note: Your nomination of someone does NOT automatically make him/her a candidate. The Nominating Team will prayerfully review all nominees and decide who qualify as candidates. Only candidates will be contacted.

CARE MINISTRIES

DIVORCECARE

Tuesdays, 6:30 pm, Glass Classroom
DivorceCare is a weekly seminar/support group that will help you heal from the hurt caused by separation or divorce. Contact Marsha at divorcecare@fpchawaii.org.

FACING CANCER WITH HOPE

Sundays, 11 am, Boardroom
A confidential support group for adults dealing with any type of cancer. On Sept 25 we'll start a new study on the book "When God and Cancer Meet" by Lynn Eib. Come to receive prayer and encouragement for fighting cancer. The group is led by Deano Kiyohara, Julie Carter, and other cancer survivors.

GRIEFSHARE

Sundays, 11 am, Glass Classroom
GriefShare is a support group for those grieving the loss of a loved one. Try it and gain valuable resources that can help you recover from your loss and rebuild your life. Questions? Email griefshare@fpchawaii.org

MILITARY MOM'S/DAD'S NIGHT OUT

Sept 17, Sat, 3:45-8pm, FPC
To give military spouses a well-deserved break, we provide childcare for a few hours. This is one of the ways we support our troops and their families. To help serve in this ministry, contact Beth Fila: bethmfila@gmail.com

STEPHEN MINISTRY

Offers Christ-centered, one-on-one weekly care and support for regular attendees of First Prez who are hurting from a crisis or loss. For more info, stop by the Care Ministries table in the Fellowship Hall.

MINISTRIES

ALPHA

Sept 7-Nov 16, Wed, 6:30 pm, FPC
ALPHA is a series of interactive sessions that freely explore the basics of the Christian faith. No pressure, no stress, no judgment. It's a safe place to ask questions. Listen, learn, discuss, and discover. Register in the Fellowship Hall on Sundays or online at fpchawaii.org

CHANCEL CHOIR REHEARSALS

Thursdays, 7 pm, Music Room
If you're gifted in singing, come and serve the Lord on Sunday mornings through our choir. Call Mary Hicks for more info at 271-1153.

MEN'S MINISTRY

SPARTAN CLASS
Thursdays, 6 pm, 4th & 5th grade classroom (downstairs)

For more info, contact Pastor Steve Peich: steve@fpchawaii.org · 532-1139

MEN'S DINNER

Sept 27, Tues, 6 pm, Fellowship Hall
All men are invited to an evening of great food and conversation with guest speaker Terry Cook, the co-founding partner of Leader Development Network Global. Terry will talk about how God has called each of us to be a leader in our area of influence in ways that others would want to follow. Dinner tickets available in the Fellowship Hall on Sunday mornings or online at fpchawaii.org. Cost: \$10 (\$5 for college-age guys).

PRAYER MINISTRY

If you need prayer, go to the front of the stage in the Sanctuary after worship services. If you'd rather submit a prayer request, please use the purple prayer form inside the green Aloha folder in your row.

INTERCESSORY PRAYER ON THE LANAI

9 am-12 pm, Sundays, Sanctuary lanai
This is where we pray as a group for the needs of others.

WOMEN'S MINISTRY

☎ 532-1135
JAM & JELLY-MAKING SESSIONS
Thursdays at 8:30 am, and on Sept 17, Sat, 9 am-noon, First Prez Kitchen

Come join other women in learning how to make jams and jellies. It's a weekly event on Thursday mornings at 8:30 am (and on Sat Sept 17 only), where jams and jellies made will be sold at the Nov 7 Church Bazaar, which benefits mission partners. RSVP to familyrapp@hotmail.com

SMALL GROUPS

For information on Small Groups, visit the website at www.fpchawaii.org, or contact Jenny Sung at jenny@fpchawaii.org

YOUNG ADULTS

YOUNG ADULTS (18-25)

☎ Tim 532-1117 / TIM@FPCHAWAII.ORG

YOUNG ADULTS (18-29)

Mondays in Kaneohe
If you're a college-aged or post-college aged young adult, you're welcome to join us. For more info contact Tim Shaw at tim@fpchawaii.org or 808-532-1117.

YOUNG ADULTS (26-40)

Mondays, 6:30 pm in Kaimuki
We're inviting all young adults (26-40 years old) to our small group on Monday nights in town. Contact Carolyn at 808-375-2199 or c_grossnickle@hotmail.com, for information and driving directions.

MISSION MAUI

Oct 28-30
If you're a young adult in your 20s and 30s, join us for a weekend of service on Maui. Partnering with Made in Hope, we'll do some construction and remodeling work on their basecamp, The Embassy. We will also take part in their ministry with at-risk youth. For more info, contact Tim Shaw.

YOUTH MINISTRY

☎ MATT 971-777-9408 / MATT@FPCHAWAII.ORG
☎ BRANDON 532-1118 / BRANDON@FPCHAWAII.ORG

MIDDLE SCHOOL (6TH-8TH)

Sundays 9:30 am, Middle School Youth Room
Fridays 6-8:15 pm, Middle School Youth Room

HIGH SCHOOL (9TH-12TH)

Sundays 9:30 am, High School Youth Room
Fridays 7-9 pm, High School Youth Room
Fridays 9-11 pm, High School Youth Room
All youth events listed are happening at the First Prez campus.

YOUNG FAMILIES

OH-ZONE (OHANA ZONE)

1st Sundays, 10:30 am-12:30 pm, Fellowship Hall
All families with young kids are invited to hang out and connect with other First Prez families at the OH-ZONE (the Ohana Zone). It's a kid-friendly environment with activities and extra space where your kids can be kids!

CHILDREN

SUNDAY SCHOOL PROGRAM

☎ KAREN, DIRECTOR OF FAMILY LIFE AND CHILDREN'S MINISTRY 440-6564 / KAREN@FPCHAWAII.ORG
CANDI, CHILDREN'S MINISTRY COORDINATOR 440-6572 / CANDI@FPCHAWAII.ORG
MARTHA, CHILDCARE COORDINATOR CHILDCARE@FPCHAWAII.ORG
LESLIE, FAMILY LIFE ADMINISTRATIVE ASSISTANT 532-1504 / LESLIE@FPCHAWAII.ORG

NURSERY (3 MO-20 MO)

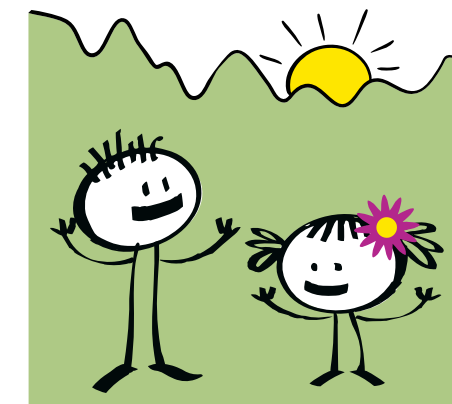
Some words for baby this month: "God loves you so much and wants you to know that you can always trust Him with your whole heart! He is so, so good to us!" We have simple worship sing-alongs and themed small group play times while we share God's love with the babies.

TODDLER (20 MONTHS-3 YRS) & PRESCHOOL (3-5 YRS)

This month our keiki will learn "I can trust God" through hearing true stories about Noah, Jonah, and Naaman. We want our little ones to know that no matter where they go, what happens or who the people are in their life, they can ALWAYS trust God and that He is 100% worthy of their trust.

ELEMENTARY (K-5TH GRADE)

This month our keiki will learn about trust: putting your confidence in someone you can depend on. To help kids unpack this idea, we look at Joseph in the Old Testament, who found himself in some of the craziest situations and yet trusted in God. We'll take a closer look at Joseph's life and discover how we can trust God and the people He's put in our lives.



Ko'olau Kids

In the Shadow of the Almighty • Ps 91:1