

# WELCOME TO FPC

## WELCOME, VISITORS!

Glad that you're worshipping the Lord with us today! Drop by the Hospitality table at the Sanctuary entrance and pick up your coupons for a free CD of one of our worship services (including today's) and a complimentary espresso drink. We also invite you to the Fellowship Hall for refreshments, fellowship, and information about the church. Thanks for visiting, and we hope you stick 6! Stick around for at least six Sundays to see if First Prez is the right fit for you.

## KO'OLAU KITCHEN

- Chicken and Dumplings
- Roast Pork and Stuffing
- Ratatouille Over Soft Polenta
- Bay Shrimp Salad Sandwich
- Chicken and Sausage Gumbo

## HONEY'S

Check out Honey's on the lower level of our campus as a dining option.

- Open daily 7 am to 5 pm
- Music nights featuring Hawaiian music on Fridays 6-8:30 pm and on Sundays 4-7 pm

## KO'OLAU GOLF

- Now that we own the golf club, LET'S PRAY FOR SUNNY WEATHER!
- Join the K-Club, Ko'olau Golf's golfer development program. Drop by the ProShop downstairs for more info.

## GENERAL INFO

### ROSE ON THE ORGAN

Is in celebration of the birth of Olivia Noelle Kyle who was born on Jan. 10th. Her parents are Gregory & Erica Kyle and her grandparents are Tom & Sharon Kyle. Congratulations to all!

### BEAUTIFY OUR SANCTUARY WITH FLOWERS

If you would like to sponsor a flower arrangement to be displayed on the chancel during Sunday worship services, sign up at the Hospitality Table today. The First Prez Flower Team will create a beautiful arrangement for you in memory of a loved one, in celebration of a birthday or anniversary, or maybe simply because you want to honor God. Thank you!

## HEALING SERVICE

**Jan 31, Sun, 6 pm, Sanctuary**

If you've never been to one of our healing services, we hope you'll join us for the next one on Jan 31<sup>st</sup>. Expect a time of quiet worship of our Lord, a word of encouragement from the pastoral staff, and an extended time of prayer for those wanting prayers for physical or emotional healing. Come and bring a friend.



## SEEKERS & JOINERS (NEW MEMBERS) CLASS

**Feb 13, Sat, 9 am-4 pm, Makai Room**

Pastor Dan Chun leads the class where he'll share the vision of First Prez, our core values, the miracle of our move to Ko'olau, and other helpful info. If you'd like to join First Prez, transfer your membership, or just learn more about us, this class is for you! No obligation to join the church after attending the class. To sign up, please e-mail [pkamahele@fpchawaii.org](mailto:pkamahele@fpchawaii.org) by Feb 7 with your name, phone number, e-mail. (Childcare may be available upon request and approval; due date for requests is Jan. 30).

## FINANCIAL REPORT

(As of 12/31/15)

Annual Budget:	\$ 4,356,117
YTD Income:	\$ 3,914,636
YTD Expenses:	\$ 3,928,864
<b>YTD Difference:</b>	<b>(-) \$ 14,228</b>

For your convenience, online donations can now be made at [www.fpchawaii.org](http://www.fpchawaii.org) or the First Prez mobile app. Please indicate in your check or on your online donation if you're giving to the capital campaign fund.

## LIFE TRAINING

### LIFE TRAINING CLASSES

**8 am**

- Discipleship (Boardroom)
- Grief Recovery (Glass Classroom)

**9:30 am**

- Grip on the Basics (Boardroom)
- College-Aged Class (Fireside)
- Bible Teaching Methods (Makai 3)
- Divine Conspiracy (Makai 3)
- Intentional Parenting (Honey's Backroom)

**11 am**

- Prayer Course (Fireside)
- From Dust to Glory (Makai 3)

## CARE MINISTRIES

### CAREGIVER SUPPORT GROUP

**Feb 16, Tues, 7 pm, Boardroom**

Join us for coffee, a light snack and support from others. Gary Powell at 625-3782 / [gary@thecaregiverfoundation.org](mailto:gary@thecaregiverfoundation.org).

### CELEBRATE RECOVERY

**Tuesdays, 6:30-8:15 pm, Youth Room**

A ministry to serve you as God heals everything from anger, codependency, overeating, resentments, chemical dependency, or any other hurt, habit, or hang-up. For more info: [celebraterecovery@fpchawaii.org](mailto:celebraterecovery@fpchawaii.org)

### DIVORCECARE

**Tuesdays, 6:30 pm, Glass Classroom**

DivorceCare is a weekly seminar/support group that will help you heal from the hurt caused by separation or divorce. Contact Marsha Coscina at [divorcecare@fpchawaii.org](mailto:divorcecare@fpchawaii.org).

### FACING CANCER WITH HOPE

**Sundays, 11 am, Boardroom**

A confidential support group for any man or woman dealing with any type of cancer. Contact us at [facingcancer@fpchawaii.org](mailto:facingcancer@fpchawaii.org)

### GRIEF SHARE

**Sundays, 11 am, Glass Classroom**

GriefShare is a support group for those grieving the loss of loved ones. You'll learn how to recover from your loss and rebuild your life. For more info, send an email to [griefshare@fpchawaii.org](mailto:griefshare@fpchawaii.org) or call Kathleen Reece 282-9260.

### STEPHEN MINISTRY

Offers Christ-centered, one-on-one weekly care and support for regular attendees of First Prez who are hurting from a crisis or loss. For more info, stop by the Care Ministries table in the Fellowship Hall.

## MINISTRIES

### CHANCEL CHOIR REHEARSALS

**Thursdays, 7 pm, Music Room**

If you're gifted in singing, come and serve the Lord on Sunday mornings through our choir. Call Mary Hicks for more info at 271-1153.

### DANCE MINISTRY

**Thursdays, 6 pm, Glass Classroom**

Come learn to worship and praise God through sign dance and/or hula. No experience necessary, just a desire to worship God in a new and special way. Contact Ann at [alohaannwalk@gmail.com](mailto:alohaannwalk@gmail.com) / 808-383-8634.

### MEN'S MINISTRY

**SPARTAN WEEKLY MEETING**

**Thurs, 5:45 pm & 6:30 pm, Youth Room**

For more info: [davidchang@fpchawaii.org](mailto:davidchang@fpchawaii.org) / 440-6571.

## MIGHTY MOMS

**Tuesdays, 9:30-11:30 am, Music Room**

Join us for a chance to connect with other moms through Bible study, prayer, and fellowship. Free childcare. Email [AlohaMightyMoms@gmail.com](mailto:AlohaMightyMoms@gmail.com) for more info.

## OUT & ABOUT: LUNCH AT THE WAIKIKI ELKS CLUB

**Jan 27, Wed, 10:30 am, Elks Club (Kalakaua Ave)**

The Out & About fellowship group invites everyone to a fun lunch by the ocean to spend time with friends and to make new friends. Cost of lunch: \$17. More info and registration details at the Out & About table in the Fellowship Hall after the 8 am and 9:30 am service today.

## PRAYER MINISTRY

If you'd like someone to pray for you, join us in front of the stage in the Sanctuary after the worship service. If you'd rather submit a prayer request, please use the purple prayer form inside the green Aloha folder in your row.



## SMALL GROUPS

For information on Small Groups, visit the website at [www.fpchawaii.org](http://www.fpchawaii.org), or contact Jenny Sung at [jenny@fpchawaii.org](mailto:jenny@fpchawaii.org)

## WOMEN'S MINISTRY

☎ 532-1135

The mission of our Women's Ministry is to draw women of all ages to a closer relationship with Jesus through God's word, prayer, fellowship, and service. Contact [jenny@fpchawaii.org](mailto:jenny@fpchawaii.org) for more info.

## YOUNG ADULTS

### COLLEGE-AGED YOUNG ADULTS (18-25)

☎ MATT 971-777-9408 / [MATT@FPCHAWAII.ORG](mailto:MATT@FPCHAWAII.ORG)

Are you a college student on Oahu? A young adult employed in the marketplace? A member of the military between 18 and 25 years old? If you said yes to any of those, then check out our college-aged community!

**Sundays, 9:30 am, Fireside Room**

Join us Sunday mornings as we watch and discuss a video series called "Why I Believe" by Pastor Chip Ingram. Then it's a quick breakfast before we head on to the 11:11 worship service.

**Mondays, 7 pm, Shoji residence**

Join us as we go through the Alpha Course College Edition.

### YOUNG ADULTS SMALL GROUPS (24-40)

**Mondays, 6:30 pm in Kapahulu**

We're inviting all young adults (26-40 years old) to our small group on Monday nights in town. Send an email to [Travis.Jones@travisjones01@gmail.com](mailto:Travis.Jones@travisjones01@gmail.com), for information and driving directions.

## YOUTH MINISTRY

☎ MATT 971-777-9408 / [MATT@FPCHAWAII.ORG](mailto:MATT@FPCHAWAII.ORG)

Being an adolescent can be hard. Life is changing drastically for kids as they mature from kids to young adults. Both Sundays and Fridays offer a place for kids to explore God's story and their faith in an incredible community full of laughter, honesty, and acceptance.

### MIDDLE SCHOOL (6<sup>TH</sup>-8<sup>TH</sup>)

**Sundays at 9:30 am**

**The Zoo Fridays 6-8:15 pm**

### HIGH SCHOOL (9<sup>TH</sup>-12<sup>TH</sup>)

**Sundays at 9:30 am**

**The Gathering Fridays 7-9 pm**

**5<sup>th</sup> Quarter Fridays 9-11 pm**

All youth events listed are happening at the First Prez campus.

### FUNKY TOWN: A PARENT GROUP

Drop off your Middle Schooler or High Schooler at the Youth Room for their youth groups on Friday nights, then join us at Funky Town in the Glass Classroom at 7 pm for casual conversation and Bible study. Contact Heidi (391-9777) or Kathy (256-2535) for more info.

## CHILDREN

### SUNDAY SCHOOL PROGRAM

☎ KAREN, DIRECTOR OF FAMILY LIFE AND CHILDREN'S

MINISTRY 440-6564 / [karen@fpchawaii.org](mailto:karen@fpchawaii.org)

AMANDA, EARLY CHILDHOOD COORDINATOR

440-6572 / [AMANDA@FPCHAWAII.ORG](mailto:AMANDA@FPCHAWAII.ORG)

LESLIE, ADMINISTRATIVE COORDINATOR

532-1504 / [LESLIE@FPCHAWAII.ORG](mailto:LESLIE@FPCHAWAII.ORG)

### CHILDREN'S MINISTRY OPEN HOUSE

See front cover announcement.

### NURSERY (3 MO-20 MO)

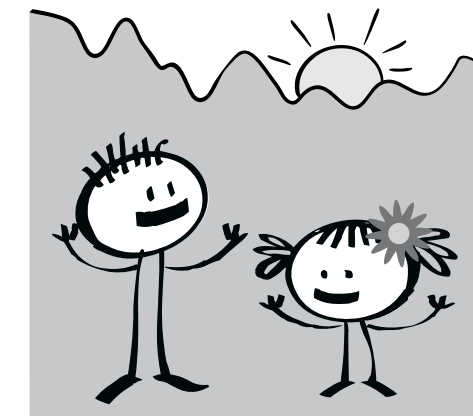
Ko'olau Kids' Nursery team shares God's love with our babies through simple worship "sing-alongs" as well as themed playtimes where they interact with our babies one-on-one, and in small group play.

### TODDLER (20 MONTHS-3 YRS) & PRESCHOOL (3-5 YRS)

Our keiki will hear stories about things ONLY JESUS can do, like feed 5000 people with only 2 fish and 5 loaves; walk on water, and calm a storm. Our keiki will learn the awesome power of Jesus and that He can do anything. "With God all things are possible." Matthew 19:26.

### ELEMENTARY (K-5<sup>TH</sup> GRADE)

Our keiki will learn what the Bible says about self-control, which is choosing to do what you should do, and not what you want to do. Our memory verse is Proverbs 25:28: "A person without self-control is like a city whose walls are broken through."



## Ko'olau Kids

In the Shadow of the Almighty • Ps 91:1