

WELCOME TO FPC

WELCOME, VISITORS!

Glad that you're worshipping the Lord with us today! Drop by the Hospitality table at the Sanctuary entrance and pick up your coupons for a free CD of one of our worship services (including today's) and a complimentary espresso drink. We also invite you to the Fellowship Hall for refreshments, fellowship, and information about the church. Thanks for visiting, and we hope you stick 6! Stick around for at least six Sundays to see if First Prez is the right fit for you.

KO'OLAU KITCHEN

- Pan Seared Fresh Catch
- Kalua Pig and Cabbage
- Linguine with Grilled Chicken Sausage
- Caprese Sandwich
- Beef Mushroom Barley Soup

HONEY'S

Check out Honey's on the lower level of our campus as a dining option.

- Open daily 7 am to 5 pm
- Music nights featuring Hawaiian music on Fridays 6-8:30 pm and on Sundays 4-7 pm

KO'OLAU GOLF

- Now that we own the golf club, LET'S PRAY FOR SUNNY WEATHER!
- Join the K-Club, Ko'olau Golf's golfer development program. For a low monthly fee, members receive unlimited range balls, free golf instruction clinics every week, discounts on green fee, food, and merchandise. Drop by the ProShop downstairs for more info.

GENERAL INFO

CHANCEL FLOWERS

Today's flowers were arranged by the First Prez Floral Team and donated by Susannah Sullivan: "For Janis Loo (my beautiful mother) on her January 20th birthday--the woman who has exuded the Lord in more ways than anyone else I know. Always caring, always loving, always giving, and always thankful--I love you Mom!"

JOB OPPORTUNITIES

FIRST PREZ

- Youth Ministry Director
 - Child Care Coordinator
- Go to www.fpchawaii.org for job description.

KO'OLAU GOLF CLUB

Head Mechanic, Spray Technician, Greenskeeper, Outside Guest Services. Go to www.koolaugolfclub.com to download the application form.

BEAUTIFY OUR SANCTUARY WITH FLOWERS

If you would like to sponsor a flower arrangement to be displayed on the chancel during Sunday worship services, sign up at the Hospitality Table today. The First Prez Flower Team will create a beautiful arrangement for you in memory of a loved one, in celebration of a birthday or anniversary, or maybe simply because you want to honor God. Thank you!

LEAVING THE ISLAND?

If you and your family are moving to the mainland, or perhaps a family member is being deployed by the military to the Middle East, let us know so we can pray for you in person before you leave. Contact Chaplain Marianna Meachen: 808-225-3708 / marianna@fpchawaii.org

SEEKERS & JOINERS (NEW MEMBERS) CLASS

Feb 13, Sat, 9 am-4 pm, Makai Room
Pastor Dan Chun will lead the class and share from his heart the vision of First Prez, our core values, the miracle of our move to Ko'olau, and other helpful info. If you'd like to join First Prez, transfer your membership, or just learn more about us, this class is for you! Note: No obligation to join the church after attending the class. To sign up, please e-mail pkamahele@fpchawaii.org by Feb. 7. We will need your name, phone number, e-mail. (Childcare may be available upon request and approval; due date for requests is Jan. 30).

FINANCIAL REPORT

(As of 11/30/15)

Annual Budget:	\$ 4,356,117
YTD Income:	\$ 3,226,124
YTD Expenses:	\$ 3,495,772
YTD Difference:	(-) \$ 269,648

For your convenience, online donations can now be made at www.fpchawaii.org or the First Prez mobile app. Please indicate in your check or on your online donation if you're giving to the capital campaign fund.

PLANNED GIVING

Learn about creative ways to support First Prez through planned gifts that benefit you, your loved ones, and the church. Go to our website at fpchawaii.org to learn get more info on gifts that cost you nothing during your lifetime. Popular giving arrangements include:

- Gifts from your will or trust
- Gifts from a retirement plan
- Gifts of stocks and appreciated assets
- Gifts of life insurance

Thank you for supporting God's work at FPC!

CARE MINISTRIES

CAREGIVER SUPPORT GROUP

Jan 19, Tues, 7 pm, Boardroom
Join us for coffee, a light snack and support from others. Gary Powell at 625-3782 / gary@thecaregiverfoundation.org.

CELEBRATE RECOVERY

Tuesdays, 6:30-8:15 pm, Youth Room
A ministry to serve you as God heals everything from anger, codependency, overeating, resentments, chemical dependency, or any other hurt, habit, or hang-up. For more info: celebratercovery@fpchawaii.org

DIVORCECARE

Tuesdays 'til Apr 5, 6:30 pm, Glass Classroom
DivorceCare is a weekly seminar/support group that will help you heal from the hurt caused by separation or divorce. Contact Marsha Coscina at divorcecare@fpchawaii.org.

FACING CANCER WITH HOPE

Sundays, 11 am, Boardroom
A confidential support group for any man or woman dealing with any type of cancer. Contact us at facingcancer@fpchawaii.org

GRIEFSHARE

Sundays 'til March 20, 11 am, Glass Classroom
GriefShare is a support group for those grieving the loss of loved ones. You'll learn how to recover from your loss and rebuild your life. For more info, send an email to griefshare@fpchawaii.org or call Kathleen Reece 282-9260.

STEPHEN MINISTRY

Offers Christ-centered, one-on-one weekly care and support for regular attendees of First Prez who are hurting from a crisis or loss. For more info, stop by the Care Ministries table in the Fellowship Hall.

MINISTRIES

BELL CHOIR

Sundays, 11 am, Music Room
No experience necessary. Call Greg Harberts for more info at 277-8200.

CHANCEL CHOIR REHEARSALS

Thursdays, 7 pm, Music Room
If you're gifted in singing, come and serve the Lord on Sunday mornings through our choir. Call Mary Hicks for more info at 271-1153.

DANCE MINISTRY

Thursdays starting Jan 21, 6 pm, Glass Classroom
Come learn to worship and praise God through sign dance and/or hula. No experience necessary, just a desire to worship God in a new and special way. Contact Ann at alohaannwalk@gmail.com / 808-383-8634.

MEN'S MINISTRY

SPARTAN WEEKLY MEETING
Thurs, 5:45 pm & 6:30 pm, Youth Room
For more info: davidchang@fpchawaii.org / 440-6571.

MIGHTY MOMS

Tuesdays, 9:30-11:30 am, Music Room
Join us for a chance to connect with other moms through Bible study, prayer, and fellowship. Free childcare. Email AlohaMightyMoms@gmail.com for more info.

OUT & ABOUT: LUNCH AT THE WAIKIKI ELKS CLUB

Jan 27, Wed, 10:30 am, Elks Club (Kalakaua Ave)
The Out & About fellowship group invites you to a lunch by the ocean (at the Waikiki Elks Club) to spend time with friends and to make new friends. Cost of lunch: \$17. Street parking only, so bring lots of quarters. If you want to come, sign up today in the Fellowship Hall after the 8am or 9:30 am worship service.

PRAYER MINISTRY

If you'd like someone to pray for you, join us in front of the stage in the Sanctuary after the worship service. If you'd rather submit a prayer request, please use the purple prayer form inside the green Aloha folder in your row.



SMALL GROUPS

For information on Small Groups, visit the website at www.fpchawaii.org, or contact Jenny Sung at jenny@fpchawaii.org

WOMEN'S MINISTRY

☎ 532-1135
The mission of our Women's Ministry is to draw women of all ages to a closer relationship with Jesus through God's word, prayer, fellowship, and service. Contact jenny@fpchawaii.org for more info.

FIRST PREZ CRAFTERS

Fridays, 9 am-12 pm, Glass Classroom
Join the team on its 40th year of crafting! We've started creating crafts for the annual church Bazaar. We welcome donations of gently used Christmas ornaments, ribbons, paper and decorations, and men's or boys' Hawaiian shirts. Contact Sky Stewart: 239-8446/tutusky2013@gmail.com.

YOUNG ADULTS

COLLEGE-AGED YOUNG ADULTS (18-25)

☎ MATT 971-777-9408 / MATT@FPCHAWAII.ORG
Are you a college student on Oahu? A young adult employed in the marketplace? A member of the military between 18 and 25 years old? If you said yes to any of those, then check out our college-aged community!

Sundays, 9:30 am, on the Makai Side (towards the ocean) in the Fellowship Hall

Join us as we discuss the Scripture used in the sermon that Sunday before the 11:11 service.
Mondays, 7 pm, Shoji residence
Join us as we go through the Alpha Course College Edition.

YOUNG ADULTS SMALL GROUPS (24-40)

Mondays, 6:30 pm in Kapahulu
We're inviting all young adults (26-40 years old) to our small group on Monday nights in town. Send an email to Travis Jones, traviswjones01@gmail.com, for information and driving directions.

YOUTH MINISTRY

☎ MATT 971-777-9408 / MATT@FPCHAWAII.ORG
Being an adolescent can be hard. Life is changing drastically for kids as they mature from kids to young adults. Both Sundays and Fridays offer a place for kids to explore God's story and their faith in an incredible community full of laughter, honesty, and acceptance.

MIDDLE SCHOOL (6TH-8TH)

Sundays at 9:30 am
The Zoo Fridays 6-8:15 pm

HIGH SCHOOL (9TH-12TH)

Sundays at 9:30 am
The Gathering Fridays 7-9 pm
5th Quarter Fridays 9-11 pm
All youth events listed are happening at the First Prez campus.

FUNKY TOWN: A PARENT GROUP

Drop off your Middle Schooler or High Schooler at the Youth Room for their youth groups on Friday nights, then join us at Funky Town in the Glass Classroom at 7 pm for casual conversation and Bible study. Contact Heidi (391-9777) or Kathy (256-2535) for more info.

CHILDREN

SUNDAY SCHOOL PROGRAM

☎ KAREN, DIRECTOR OF FAMILY LIFE AND CHILDREN'S MINISTRY 440-6564 / karen@fpchawaii.org
AMANDA, EARLY CHILDHOOD COORDINATOR 440-6572 / AMANDA@FPCHAWAII.ORG
LESLIE, ADMINISTRATIVE COORDINATOR 532-1504 / LESLIE@FPCHAWAII.ORG

CHILDREN'S MINISTRY OPEN HOUSE

Jan 31, Sun: For parents with last names A-L
Feb 28, Sun: For parents with last names M-Z
8 am, 9:30 am, or 11 am
Parents, drop by the First Prez Children's Ministry area on campus for an Open House. Learn more about and experience for yourself how your children are taught every Sunday at First Prez—how they learn about God in a large group and in small groups, and how they have fun while doing it! Come promptly at 8 am, 9:30 am, or 11 am for the one-hour experience.

NURSERY (3 MO-20 MO)

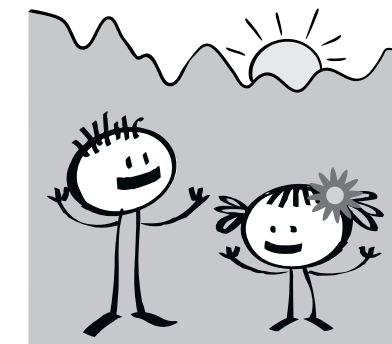
Ko'olau Kids' Nursery team shares God's love with our babies through simple worship "sing-alongs" as well as themed playtimes where they interact with our babies one-on-one, and in small group play. This month our playtimes focus on the basic TRUTH: Jesus wants to be my friend forever, and our bottom line is: Jesus can do anything.

TODDLER (20 MONTHS-3 YRS) & PRESCHOOL (3-5 YRS)

Our keiki will hear stories about things ONLY JESUS can do, like feed 5000 people with only 2 fish and 5 loaves; walk on water; and calm a storm. Our keiki will learn the awesome power of Jesus and that He can do anything. "With God all things are possible." Matthew 19:26.

ELEMENTARY (K-5TH GRADE)

Our keiki will learn what the Bible says about self-control, which is choosing to do what you should do, and not what you want to do. Our memory verse is Proverbs 25:28: "A person without self-control is like a city whose walls are broken through."



Ko'olau Kids

In the Shadow of the Almighty • Ps 91:1