

EVENT calendar

SUNDAY, JANUARY 10

8:00AM	Worship Service	Sanctuary
8:00AM	Preschool/K & Nursery	Rm LL-2/Nursery - Lower Level
8:00AM	Children's Ministry Activities	Rm CM 3-10 - Lower Level
9:30AM	Worship Service	Sanctuary
9:30AM	Preschool/K & Nursery	Rm LL-2/Nursery - Lower Level
9:30AM	Children's Ministry Activities	Rm CM 3-10 - Lower Level
9:30AM	College-Aged Community (18-25)	Fireside Room
11:00AM	Facing Cancer with Hope	Boardroom
11:00AM	GriefShare	Glass Classroom
11:11AM	Worship Service	Sanctuary
11:11AM	Preschool/K & Nursery	Rm LL-2/Nursery - Lower Level
11:11AM	Children's Ministry Activities	Rm CM 3-10 - Lower Level

MONDAY, JANUARY 11

6:30PM	Young Adults Small Group (24-40)	TBD
7:00PM	College-Aged Small Group (18-25)	Shoji residence

TUESDAY, JANUARY 12

9:30AM	Mighty Moms	Music Room
6:30PM	Celebrate Recovery	Youth Room
6:30PM	DivorceCare	Glass Classroom

WEDNESDAY, JANUARY 13

THURSDAY, JANUARY 14

5:45PM	Men's SPARTAN Group	Boardroom
6:30PM	Men's SPARTAN Group	Boardroom
6:30PM	Dance Ministry	Glass Classroom
7:00PM	Choir Rehearsal	Music Room
7:00PM	Caregiver Support Group	Boardroom

FRIDAY, JANUARY 15

9:00AM	Women's Craft Group	Glass Classroom
--------	---------------------	-----------------

SATURDAY, JANUARY 16

9:00AM	Women's Bible Study	Glass Classroom
--------	---------------------	-----------------



IMPACT MINISTRIES

LOCAL | GLOBAL MISSIONS

Contact: Peter Kang: peterkanghi@gmail.com
 Kyle Watari: kwatari@gmail.com

MUSTARD SEED MIRACLE (MSM)

Saturdays

We're building our first home in Waimanalo for a family in need. This is just the first of many homes that Mustard Seed Miracle will build in the years to come. You can volunteer to help us. Find out more online at www.fpcimpact.org. Click on the links for Mustard Seed Miracle.

MISSION TEAMS

Please keep the following First Prez Mission Teams in your prayers as they minister abroad: Dates: Cambodia Medical Team (Jan 1-10); Cambodia Service Team (Jan 7-14); Philippines Team (Jan. 14-24).

SAN FRANCISCO MISSION TRIP

Identical Information Meetings

on Feb 14, Sun, 11 am & 12:30 pm, Fireside Room

Applications are due on Sun, March 6, Fireside Room

First Prez partners again with the nonprofit City Impact in serving people in need in the Tenderloin district of San Francisco. We want to learn from City Impact how we can better serve the down-and-out in Oahu. The trip involves five days of serving in the Tenderloin and learning at City Impact's annual conference. Join us in this opportunity to experience God change lives as we serve those in need. Go to fpcimpact.org for more info and to download the application form.

TIMES FOR FIRST PREZ SERMONS ON TV

Oceanic Channels 25 and 1025 (in HD)/Digital 36 Mondays 7:30-8 pm; Tuesdays 3-3:30 am; Wednesdays & Sundays 11-11:30 am; Thursdays 9-9:30 pm; Fridays 7-7:30 am; Saturdays 11:30 pm-12 am

MEDIA RELEASE: Your image and voice may be used either for television, radio or on audio/visual products. Your presence constitutes your release of all rights.

THANK YOU FOR YOUR KOKUA Please turn off pagers and cell phones during worship, and please refrain from bringing food and beverages inside the Sanctuary. Also, we love babies, but if yours is crying, please comfort him/her in the infant room to the side of the Sanctuary.

PARKING

Let's help the elderly and those with difficulty walking by leaving parking spaces closest to the Sanctuary available for them.

FOR THE HEARING IMPAIRED

To help you listen to today's worship service better, borrow one of our assistive listening devices available at the sound booth in the Sanctuary.

DEPLOYED MILITARY PRAYER LIST

Do you know people in the military who have been deployed? Write down their names on the Aloha Form along with their military branch, their location and their relation to you. We'd like to keep them in prayer on a regular basis. Call 532-1115. And if you know of anyone on our list who has returned home, please notify us.

First Prez Members & Regular Attenders

Greg Chow
 Kenneth (KJ) Clouse
 Charles Coassin
 J.P. Collmus
 Oliver Ens
 Redmond Gautier
 Anthony Goodner
 David Guerrero
 Christi Morrissey
 Eddie Rostetter
 Sean Thompson

Family & Friends

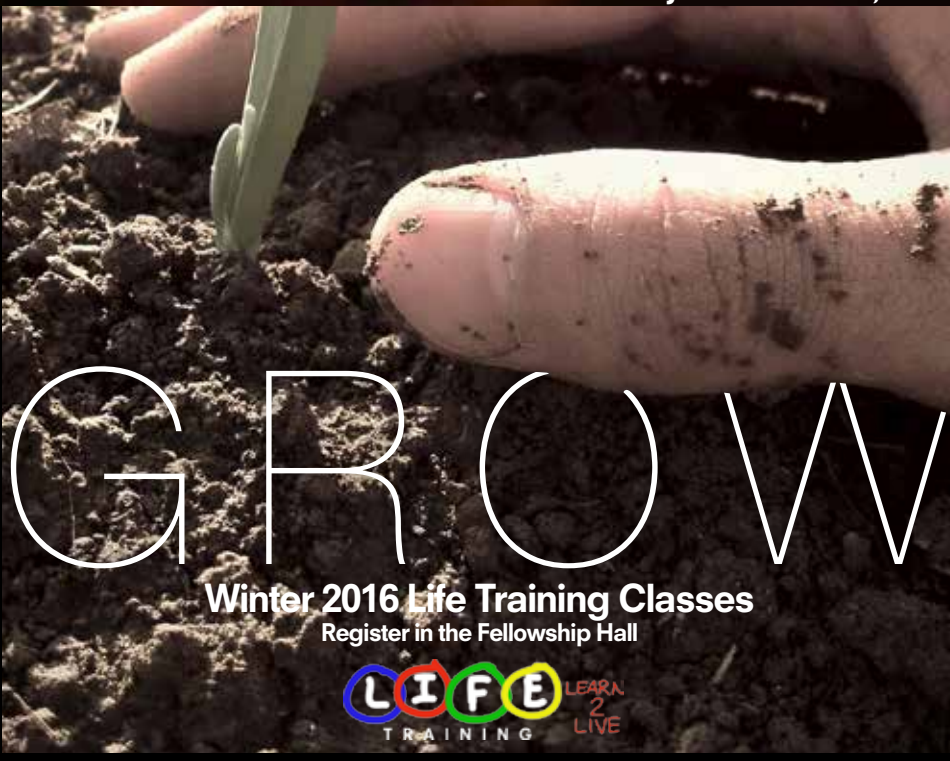
1st, 2nd, 3rd BN 3D Marines
 Air Force Reserves 48th APS
 Doug Alfar
 Robert Andrews
 Kevin Bullough
 Michael Cacciapuoti
 Toby Caldwell
 Rudy Cardona
 John Cruz
 Sam Davis
 A. Diamond
 Douglas Francis
 Orlando Fraser
 Josh Henry

William Heron
 William Hollifield
 Phil Hollstein
 Bonnie Huber
 Damon Hunt
 Andrew Hutchison
 Benjamin Ivansco
 Judy Kovell
 S. Manglona
 Marcy Meyer
 Steve Morris
 Daniel Murphy
 Lee Nakasone
 Rob Pederson
 Sebastian Schnellbacher

Charles Shelton
 Joey Stewart
 William Stewart
 J. Tang
 Natasia Upadahaya
 Evelyn Vento
 Wendi Waits
 Paul Wiley
 Lenny Williams
 Aaron Yoshimura

NEWS weekly

FPC NEWS FOR JANUARY 10-16, 2016



REGISTER TODAY FOR NEW LIFE TRAINING CLASSES

Classes start Sunday, Jan 24

Go deeper in your walk with God by learning more on how to apply biblical truths to everyday living. Sign up for a Life Training Class. Check out the brochure with your worship bulletin today.

MEN'S DINNER

Jan 26, Tues, 6 pm, Sanctuary

All the guys are invited to the Men's Dinner, featuring our Associate Director of Worship, Ryan Smithson. He'll share his personal story of how God has stretched his faith in his day-to-day encounters with Him. Ryan will also talk about Moses' encounters with God, as recorded in scripture, and how Moses experienced God in the ordinary and in the spectacular. Purchase your dinner tickets today in the Fellowship Hall or online at fpchawaii.org.

CONGREGATIONAL MEETING

Today, Sanctuary, right after the last worship service (approx 12:20 pm)

We hope to see all First Prez members at the Annual Congregational Meeting today. Purposes of the meeting: (1) Nominate and elect 2016 Elders, Deacons, and members of the Nominating Team; (2) Present the 2016 church budget to the congregation; (3) Approve amended and restated church by-laws; (4) Formally dissolve the Calls of Pastors Sim Fulcher and Drew Hulse.

Elder nominees: Nat Higa, Sharon Kyle, Derek Morita, Lena Pang, and Scott Schultz. Deacon nominees: John Ellis, Betti Griffen, Divina Jenkins, John Jenkins, Barbra Manni, Caroline Mee, Rafael Mercado, Karen Mott, Lauren Stein, Jenny Tsukazaki. (Brief elder and deacon bios are available at the Front Desk.) Nominating Team nominees: Ron McNichols, Candi Miller, Bruce Patterson, Stacia Peleholani, Anita Rhee Stirling, Tracie Ann Tjapkes, Laurie Tam Oishi, Dale Vincent.

DivorceCare (support group) starts Tuesday night, Jan 12. Turn the page for more details.



FIRST PRESBYTERIAN CHURCH OF HONOLULU AT KO'OLAU

45-550 Kionaole Road ■ Kane'ohe ■ HI 96744

(808) 532-1111 ■ www.fpchawaii.org ■ aloha@fpchawaii.org

www.facebook.com/firstprez www.twitter.com/firstprez

WELCOME TO FPC

WELCOME, VISITORS!

Glad that you're worshipping the Lord with us today! Drop by the Hospitality table at the Sanctuary entrance and pick up your coupons for a free CD of one of our worship services (including today's) and a complimentary espresso drink. We also invite you to the Fellowship Hall for refreshments, fellowship, and information about the church. Thanks for visiting, and we hope you stick 6! Stick around for at least six Sundays to see if First Prez is the right fit for you.

KO'OLAUKITCHEN

- Baked Chicken
- Cottage Pie
- Chinese Chicken Salad
- Grilled Smoked Salmon & Goat Cheese Sandwich
- Portuguese Bean Soup

HONEY'S

Check out Honey's on the lower level of our campus as an alternative dining option on Sunday mornings.
• Open daily 7 am to 5 pm
• Music nights featuring Hawaiian music on Fridays 6-8:30 pm and on Sundays 4-7 pm

KO'OLAUGOLF

Ko'olau Golf offers an excellent deal through its K-CLUB, a golfer development program. For a low monthly fee, K-Club members receive unlimited driving range balls, free golf instruction clinics every week, discounts on green fee, food, and merchandise. Drop by the ProShop downstairs for info on how to sign up.

GENERAL INFO

JOB OPPORTUNITIES

FIRST PREZ
Youth Ministry Director & Child Care Coordinator
Go to www.fpchawaii.org for job description.

KO'OLAUGOLF CLUB
Head Mechanic, Spray Technician, Greenskeeper, Outside Guest Services. Go to www.koolaugolf-club.com to download the application form.

ITALY TOUR—Sept 6-17, 2016

Pastor Dan and Pam are leading a tour to the Vatican, Rome, Assisi, Florence, Venice and Sienna, September 6-17, 2016. If interested, pick up a brochure at the Front Desk or email rosella@fpchawaii.org for a digital version, plus the registration form. Discounts for early registration start today.

OFFERING ENVELOPES FOR 2016

Tithing/offering envelopes for 2016 are available by the Front Desk at the Main Lobby. Pick up a box after the worship service.

BEAUTIFY OUR SANCTUARY WITH FLOWERS IN 2016

If you would like to sponsor a flower arrangement to be displayed on the chancel during Sunday worship services, sign up at the Hospitality Table today. The First Prez Flower Team will create a beautiful arrangement for you in memory of a loved one, in celebration of a birthday or anniversary, or maybe simply because you want to honor God. Thank you!

FINANCIAL REPORT

(As of 11/30/15)

Annual Budget:	\$ 4,356,117
YTD Income:	\$ 3,226,124
YTD Expenses:	\$ 3,495,772
YTD Difference:	(-) \$ 269,648

For your convenience, online donations can now be made at www.fpchawaii.org or the First Prez mobile app. Please indicate in your check or on your online donation if you're giving to the capital campaign fund.

PLANNED GIVING

Learn about creative ways to support First Prez through planned gifts that benefit you, your loved ones, and the church. Go to our website at fpchawaii.org to learn get more info on gifts that cost you nothing during your lifetime. Popular giving arrangements include:
• Gifts from your will or trust
• Gifts from a retirement plan
• Gifts of stocks and appreciated assets
• Gifts of life insurance
Thank you for supporting God's work at First Prez!



LIFE TRAINING

LIFE TRAINING CLASSES

Classes start on Jan 24, Sunday, but registration is going on in the Fellowship Hall. See the brochure with your worship bulletin today for the list and descriptions of classes, or go to our website fpchawaii.org

CARE MINISTRIES

CAREGIVER SUPPORT GROUP

Feb 4, Thurs, 7 pm, Boardroom
Join us for coffee, a light snack and support from others. Gary Powell at 625-3782 / gary@thecaregiverfoundation.org.

CELEBRATE RECOVERY

Tuesdays, 6:30-8:15 pm, Youth Room
A ministry to serve you as God heals everything from anger, codependency, overeating, resentments, chemical dependency, or any other hurt, habit, or hang-up God may be speaking to you about. For more info: celebraterecovery@fpchawaii.org

DIVORCECARE

Tuesdays 'til Apr 5, 6:30 pm, Glass Classroom
DivorceCare is a weekly seminar/support group that will help you heal from the hurt caused by separation or divorce. Contact Marsha Coscina at divorcecare@fpchawaii.org.

FACING CANCER WITH HOPE

Sundays, 11 am, Boardroom
A confidential support group for any man or woman dealing with any type of cancer. Contact us at facingcancer@fpchawaii.org



GRIEF SHARE

Sundays 'til March 20, 11 am, Glass Classroom
GriefShare is a support group of friendly, caring people who will walk alongside you as you grieve over the loss of a loved one. You'll gain access to valuable resources to help you recover from your loss and rebuild your life. To sign up for the next GriefShare session, send an email to griefshare@fpchawaii.org or call Kathleen Reece 808-282-9260.

STEPHEN MINISTRY

Offers Christ-centered, one-on-one weekly care and support for regular attendees of First Prez who are hurting from a crisis or loss. To receive care from a Stephen Minister, stop by the Care Ministries table in the Fellowship Hall.

MINISTRIES

BELL CHOIR

Sundays, 11 am, Music Room
No experience necessary. Call Greg Harberts for more info at 277-8200.

BOOK CLUB

Jan 16: Deep Down Dark by Hector Tobar
The untold stories of 33 men buried in a Chilean mine, and the miracle that set them free. Email karenkts@gmail.com, or call Marcia at 735-5021 for the location of our next meeting.

CHANCEL CHOIR REHEARSALS

Thursdays, 7 pm, Music Room
If you're gifted in singing, come and serve the Lord on Sunday mornings through our choir. Call Mary Hicks for more info at 271-1153.

MEN'S MINISTRY

SPARTAN WEEKLY MEETING
Thurs, 5:45 pm & 6:30 pm, Youth Room
For more info: davidchang@fpchawaii.org / 440-6571.

MIGHTY MOMS

Tuesdays, 9:30-11:30 am, Music Room
Join us for a chance to connect with other moms through Bible study, prayer, and fellowship. Free childcare. Email AlohaMightyMoms@gmail.com for more info.

PRAYER MINISTRY

If you'd like someone to pray for you, join us in front of the stage in the Sanctuary after the worship service. If you'd rather submit a prayer request, please use the purple prayer form inside the green Aloha folder in your row.

RED CARPET TEAM

Join us in creating a friendly and welcoming environment for guests and members who come to our church. The Red Carpet Team is made up of ushers, hospitality table greeters, shuttle van drivers, parking volunteers, and coffee bar baristas. Training will be provided. If you're naturally friendly, this will be a good fit! For more info, contact Rosella Shishido: 532-1113 rosella@fpchawaii.org

SMALL GROUPS

For information on Small Groups, visit the website at www.fpchawaii.org, or contact Jenny Sung at jenny@fpchawaii.org

WOMEN'S MINISTRY

☎ 532-1135
The mission of our Women's Ministry is to draw women of all ages to a closer relationship with Jesus through God's word, prayer, fellowship, and service. Contact jenny@fpchawaii.org for more info.

FIRST PREZ CRAFTERS

Fridays, 9 am-12 pm, Glass Classroom
Join the team on its 40th year of crafting! As early as January we start creating crafts for the annual church Bazaar. We welcome donations of gently used Christmas ornaments, ribbons, paper and decorations, and mens' or boys' Hawaiian shirts. Contact Sky Stewart: 239-8446/tutusky2013@gmail.com.

YOUNG ADULTS

COLLEGE-AGED YOUNG ADULTS (18-25)

☎ MATT 971-777-9408 / MATT@FPCHAWAII.ORG
Are you a college student on Oahu? A young adult employed in the marketplace? A member of the military between 18 and 25 years old? If you said yes to any of those, then check out our college-aged community!

Sundays, 9:30 am, on the Makai Side (towards the ocean) in the Fellowship Hall

Join us as we discuss the Scripture used in the sermon that Sunday before the 11:11 service.
Mondays, 7 pm, Shoji residence
Join us as we go through the Alpha Course College Edition.

YOUNG ADULTS SMALL GROUPS (24-40)

Mondays, 6:30 pm in Kapahulu
We're inviting all young adults (26-40 years old) to our small group on Monday nights in town. Send an email to Travis Jones, traviswjones01@gmail.com, for information and driving directions.

YOUTH MINISTRY

☎ MATT 971-777-9408 / MATT@FPCHAWAII.ORG
Being an adolescent can be hard. Life is changing drastically for kids as they mature from kids to young adults. Both Sundays and Fridays offer a place for kids to explore God's story and their faith in an incredible community full of laughter, honesty, and acceptance.

MIDDLE SCHOOL (6TH-8TH)

No youth group on Fri, Jan 15, or Sunday school on Jan 17 because of the youth retreat at Camp Erdman.

HIGH SCHOOL (9TH-12TH)

No youth group on Fri, Jan 15, or Sunday school on Jan 17 because of the youth retreat at Camp Erdman.

FUNKY TOWN: A NEW PARENT GROUP

No meeting on Friday, Jan 15. Contact Heidi (391-9777) or Kathy (256-2535) for when Funky Town meets again.

CHILDREN

SUNDAY SCHOOL PROGRAM

☎ KAREN, DIRECTOR OF FAMILY LIFE AND CHILDREN'S MINISTRY 440-6564/karen@fpchawaii.org
AMANDA, EARLY CHILDHOOD COORDINATOR 440-6572/AMANDA@FPCHAWAII.ORG
LESLIE, ADMINISTRATIVE COORDINATOR 532-1504/LESLIE@FPCHAWAII.ORG

NURSERY (3 MO-20 MO)

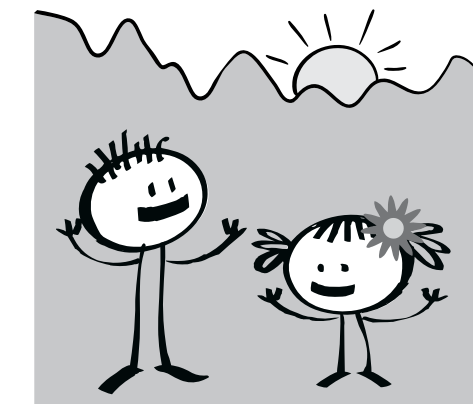
Ko'olau Kids' Nursery team shares God's love with our babies through simple worship "sing-alongs" as well as themed playtimes where they interact with our babies one-on-one, and in small group play. This month our playtimes focus on the basic TRUTH: Jesus wants to be my friend forever and our bottom line is: Jesus can do anything.

TODDLER (20 MONTHS-3 YRS) & PRESCHOOL (3-5 YRS)

This January, our keiki will hear stories about things ONLY JESUS can do, like feed 5000 people with only 2 fish and 5 loaves; walk on water, and calm a storm. Our keiki will learn the awesome power of Jesus and that He can do anything. "With God all things are possible." Matthew 19:26, NIV

ELEMENTARY (K-5TH GRADE)

This January, our keiki will learn what the Bible says about self-control, which is choosing to do what you should do, and not what you want to do. We will learn that self-control really has more to do with God than self. Our memory verse is Proverbs 25:28: "A person without self-control is like a city whose walls are broken through." This verse is a great reminder for kids (and adults) that they can have self-control with the help of the Holy Spirit in them.



Ko'olau Kids

In the Shadow of the Almighty • Ps 91:1